

# 2014 CORVETTE STINGRAY TALKING POINTS

## CORVETTE REDEFINES MODERN PERFORMANCE

The all-new Corvette delivers more precision, performance and efficiency:

- A sophisticated LT1 engine combines advanced technologies including Direct Injection, Variable Valve Timing and cylinder deactivation for more power and more efficiency
- Well-engineered to be the quickest, most powerful and most capable standard Corvette
- Estimated 450 hp, 450 lb.-ft. of torque
- 0-60 in under 4.0 seconds
- More than 1 g cornering
- Most efficient Corvette, expected to surpass the current Corvette's EPA-estimated 26 mpg highway

## FUNCTIONAL, BEAUTIFUL DESIGN

The tightly sculpted, athletic exterior is functional, and distinctly Corvette:

- Every line and surface has been optimized to enhance overall performance
  - Race-proven aerodynamics reduce lift for high-speed stability
  - Brake, transmission and differential coolers for track capability with Z51 Performance Package
- Driver-oriented interior design integrates authentic materials, state-of-the-art technologies and world-class craftsmanship
  - Two all-new seat designs with magnesium frames deliver exceptional comfort and support
  - Two HD-resolution eight-inch screens can be tailored to the driver's preference

## ADVANCED DRIVER TECHNOLOGIES

Corvette has many technologies designed to make you a more confident driver – both on the road and on the track:

- Standard 7-speed manual with Active Rev Matching – syncs the engine speed to the gear ratio, for every up and down shift
- Driver Mode Selector tailors virtually every aspect of the car to the driver and their environment
  - 5 modes, including Weather, Eco, Tour, Sport and Track
  - Changes up to 12 aspects of the car, from the exhaust sound to the chassis settings

## WORLD-CLASS ENGINEERING

- Lightweight materials contribute to a perfect 50-50 weight distribution and world-class power-to-weight ratio for optimal handling and acceleration
  - All-aluminum frame structure is 57 percent stiffer and 99 pounds (45 kilograms) lighter than the sixth-generation Corvette steel frame
  - Carbon-fiber removable roof, carbon-fiber hood and carbon-nano-composite body structures further reduce weight for improved handling

## THE RETURN OF THE STINGRAY

- The best Corvettes – like the '63 Stingray – embodied performance leadership, delivering cutting-edge technologies, breathtaking design and awe-inspiring driving experiences
- The all-new 2014 Corvette Stingray Coupe continues that tradition by leveraging modern advancements in design, technology and engineering
  - The first use of the Stingray name on a production car was in 1963, which marked both the introduction of the all-new second-generation Corvette, as well as the first time Corvette was offered as a coupe

## CORVETTE STINGRAY CONVERTIBLE

- An open-top driving experience with no compromise in performance technology or design
- All of the features and capabilities introduced on the Corvette Stingray coupe carry over to the convertible model
- The structural changes are limited to those necessary to accommodate the folding top and repositioned safety belt mounts
- All-new fully-electronic top (no latches) that can be lowered remotely using the remote key fob or opened and closed utilizing a switch on the left hand side of the steering column
- The top can also be opened or closed on the go, at speeds up to 30 mph
- Top is available in Black, Gray, Kalahari and Blue



## 2014 CORVETTE STINGRAY



Preproduction model shown. Actual production model may vary.

The 2014 Corvette Stingray leverages advancements in lightweight materials, electronics and engineering not possible until now. Every component – from the lightweight insulation developed for aerospace, to the race-proven Corvette aerodynamic exterior – had to earn its way in by contributing to a singular mission: improve the driver's connection to the car and make the Corvette drive more like an extension of the driver than ever before. The 2014 Corvette Stingray will go on sale in Q3 of 2013 with the Convertible models being available later in the year.

GM CONFIDENTIAL. FOR INTERNAL USE ONLY.



# CORVETTE STINGRAY CUSTOMERS

## LOYALIST/ENTHUSIAST

- Primarily Males; seeking to fulfill dream
- Know the Corvette history
- Want to be a part of the legacy
- Are passionate about the Corvette brand

## LIFE PRECISIONIST

- Mid 40's; highly educated; primarily males
- Reside in urban areas
- Execute with craft and aspire to new challenges
- Love the experience of driving
- Entrepreneurial and like to try new things

## PRODUCT HIGHLIGHTS

### EXTERIOR

- All-new sophisticated and elegant design
- Race-proven aerodynamics
- Visible aerodynamic features reduce lift and provide cooling
- Carbon-fiber removable roof
- Lighting
  - HID Xenon low and high beam
  - LED DRL/park/turn
- Four-element taillamps
- Standard carbon fiber hood
- Five highly functional air vents
  - Hood extractor
  - Two front fender vents
  - Trans-oil cooler (rear)
  - Differential cooler (rear)
- All-new fully-electronic top (Convertible models)
- Standard carbon fiber removable roof panel (Coupe models)

### INTERIOR

- Richly appointed, completely new driver-centric interior
- Features carbon-fiber, aluminum and hand-wrapped leather materials
- Two new seating options – GT and Competition Sport (late availability)
- New smaller steering wheel (360mm and unique to Corvette)
- Highly customizable instrument cluster and available color Head-Up Display
- Tablet-inspired Chevrolet MyLink with enhanced OnStar® and 3D nav maps
- Available premium Bose® 10-speaker audio system (9-speaker Bose® system is standard)



### DRIVING EXPERIENCE

- New LT1 small block 6.2-liter V8 with advanced technologies
  - Direct Injection
  - Active Fuel Management™
  - Continuously Variable Valve Timing
- The most powerful standard Corvette ever with a GM-estimated 450 horsepower and 450 lb.-ft. of torque
- The most fuel-efficient car on the market to offer 450 horsepower and achieve 0-to-60 mph in under 4 seconds (GM estimates)
- All-new aluminum frame structure that's lighter and stronger than the previous steel frame
- A perfect 50/50 weight distribution
- Driver Mode Selector with 5 modes
- Launch Control
- 7-speed manual transmission
  - Industry-unique Active Rev Matching
- Z51 Performance Package (larger wheels/tires/brakes/enhanced cooling/eLSD/dry sump oil system/performance gear ratios/performance suspension)

### EXTERIOR COLORS

- Arctic White
- Black
- Blade Silver
- Crystal Red\*
- Cyber Gray
- Laguna Blue\*
- Lime Rock Green
- Night Race Blue
- Torch Red
- Velocity Yellow\*

\* Extra Cost

### INTERIOR COLORS

- Adrenaline Red
- Gray
- Jet Black
- Kalahari
- Brownstone

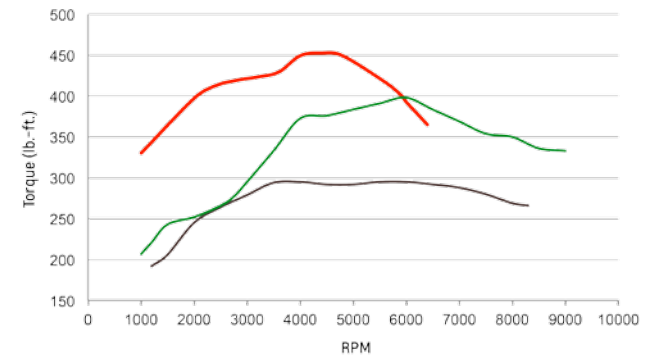
### CONVERTIBLE TOP COLORS

- Black
- Gray
- Kalahari
- Blue

## PERFORMANCE COMPARISON

MODEL	HP	TORQUE (LB.-FT.)	0-60 MPH (SECONDS)	MPG (HIGHWAY)
CORVETTE STINGRAY COUPE	450 (est.)	450 (est.)	Under 4.0 (est.)	More than 26 (est.)
PORSCHE 911	350	287	4.6	27
AUDI R8	430	316	4.4	20

## COMPETITIVE TORQUE COMPARISON



2014  
Corvette LT1, 6.2L  
450 hp  
450 lb.-ft.

2013  
Porsche 911, 3.8L  
400 hp  
325 lb.-ft.

Ferrari 458, 4.5L  
570 hp  
398 lb.-ft.